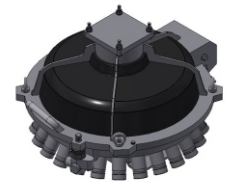
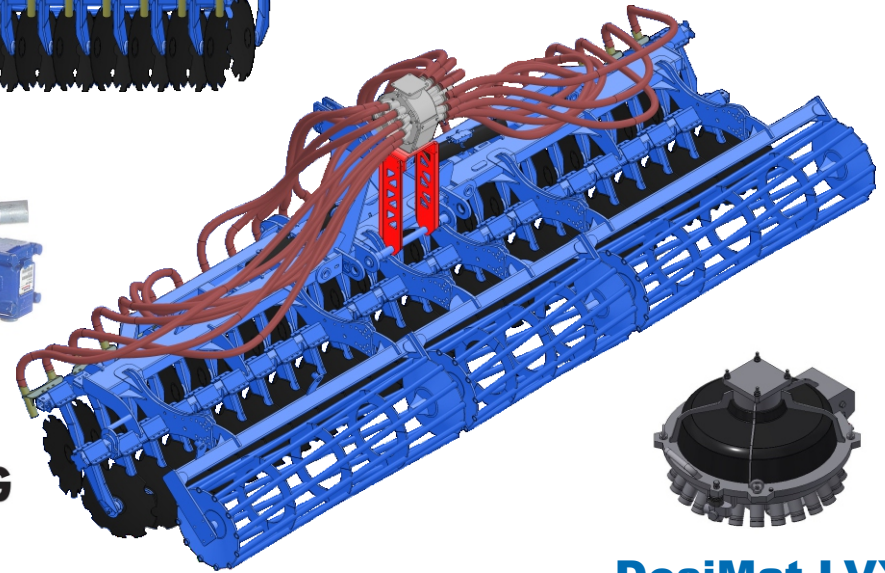
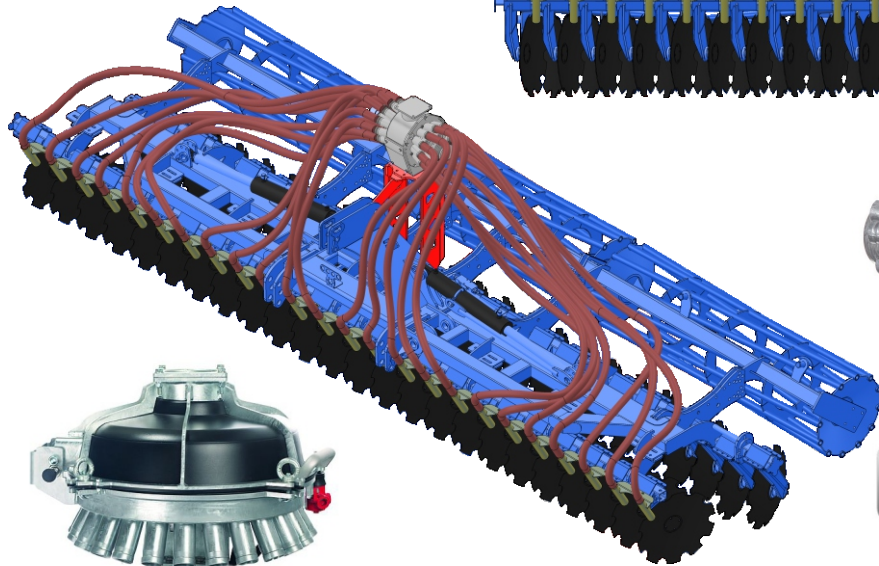
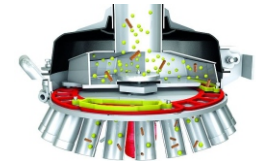
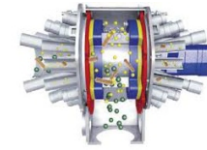
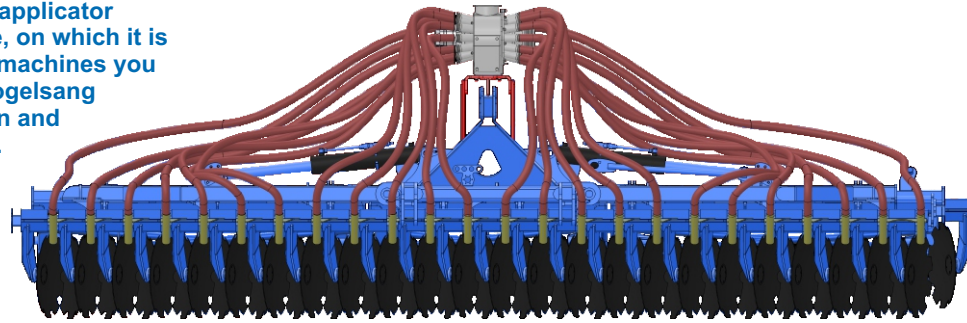
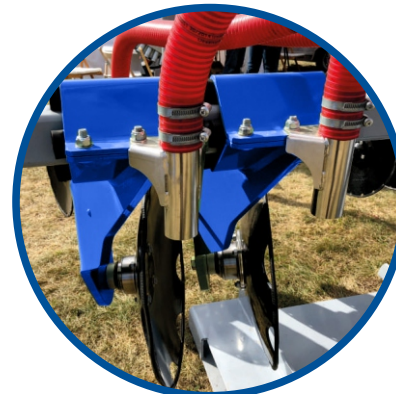


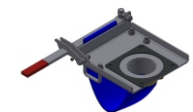
The choice of the Vogelsang liquid manure applicator depends on the width of the tillage machine, on which it is to be installed. In a wide range of Rolmako machines you will find devices that are compatible with Vogelsang applicators and allow to perform fertilisation and cultivation during one trip through the field.



**DosiMat LVX**



**ExaCut ELC**



Settling device of solids

**Combination of the soil disturbance process with simultaneous spreading of liquid manure**

**[www.rolmako.com](http://www.rolmako.com)**



## PERFECTLY COORDINATED CUTTING UNIT The core piece of the ExaCut

